

MODIS 250 & 500-meter Bands for Remote Sensing of Coastal and Inland Waters

Bryan Franz

and the

NASA Ocean Biology Processing Group

Some History

Gao, B.-C., M.J. Montes, Z. Ahmad, and C. O. Davis (2000). Atmospheric correction algorithm for hyperspectral remote sensing of ocean color from space, *Applied Optics*, 39, 887-896.

Arnone, R.A, Z.P. Lee, P. Martinolich, B. Casey, and S.D. Ladner (2002). Characterizing the optical properties of coastal waters by coupling 1 km and 250 m channels on MODIS – Terra, *Proc. Ocean Optics XVI*, Santa Fe, New Mexico, 18-22 November.

Li, R.-R., Y.J. Kaufman, B.-C. Gao, and C.O. Davis (2003). Remote Sensing of Suspended Sediments and Shallow Coastal Waters, *IEEE Trans. on Geoscience and Remote Sensing*, Vol. 41, No. 3 pp. 559.

Miller, R.L. and B.A. McKee (2004). Using MODIS Terra 250 m imagery to map concentrations of total suspended matter in coastal waters, *Remote Sensing of Environment*, 93, 259-266.

Hu, C., Z. Chen, T.D. Clayton, P. Swarzenski, J.C. Brock, and F.E. Müller-Karger (2004). Assessment of estuarine water-quality indicators using MODIS medium-resolution bands: Initial results from Tampa Bay, FL, *Remote Sensing of Environment*, 93, 423-441.

Kahru, M., B.G. Mitchell, A. Diaz, M. Miura (2004). MODIS Detects Devastating Algal Bloom in Paracas Bay, Peru, *EOS Trans. AGU*, 85 (45), 465-472.

Wang, M. and W. Shi (2005). Estimation of ocean contribution at the MODIS near-infrared wavelengths along the east coast of the U.S.: Two case studies, *Geophys. Res. Lett.*, 32, L13606.

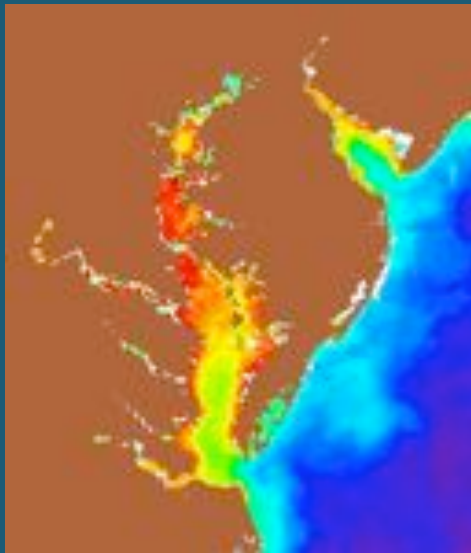
MODIS Land/Cloud Bands of Interest

Band	Wavelength	Resolution	Potential Use
1	645 nm	250 m	sediments, turbidity, IOPs
2	859	250	aerosols
3	469	500	C_a , IOPs, $CaCO_3$
4	555	500	C_a , IOPs, $CaCO_3$
5	1240	500	aerosols
6	1640	500	aerosols
7	2130	500	aerosols

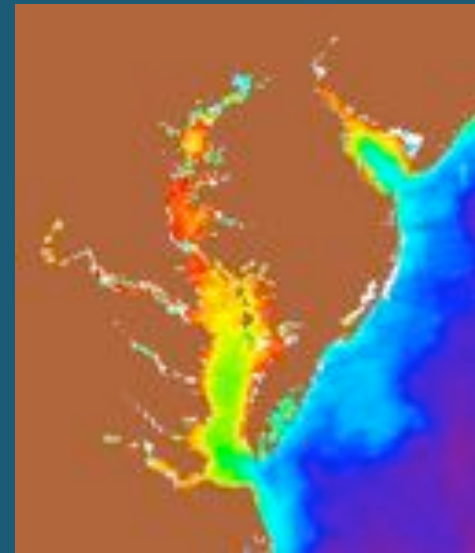
spatial resolution and expanded dynamic range come at the cost of increased digitization error (reduced sensitivity at ocean radiances) and reduced signal to noise

Chlorophyll: 1000-meter resolution

OC3 = f(443,488,551)



OC2 = f(469,555)



0.4

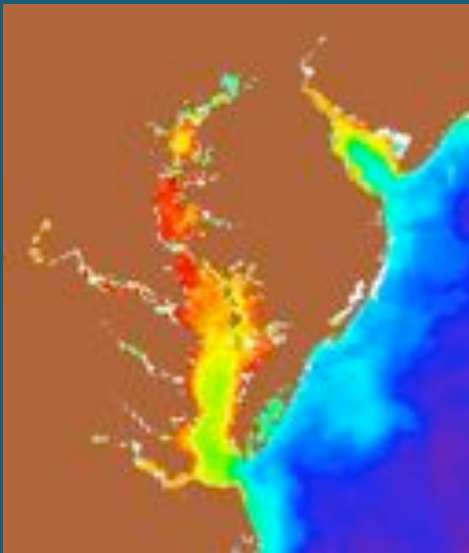
mg m⁻³

100

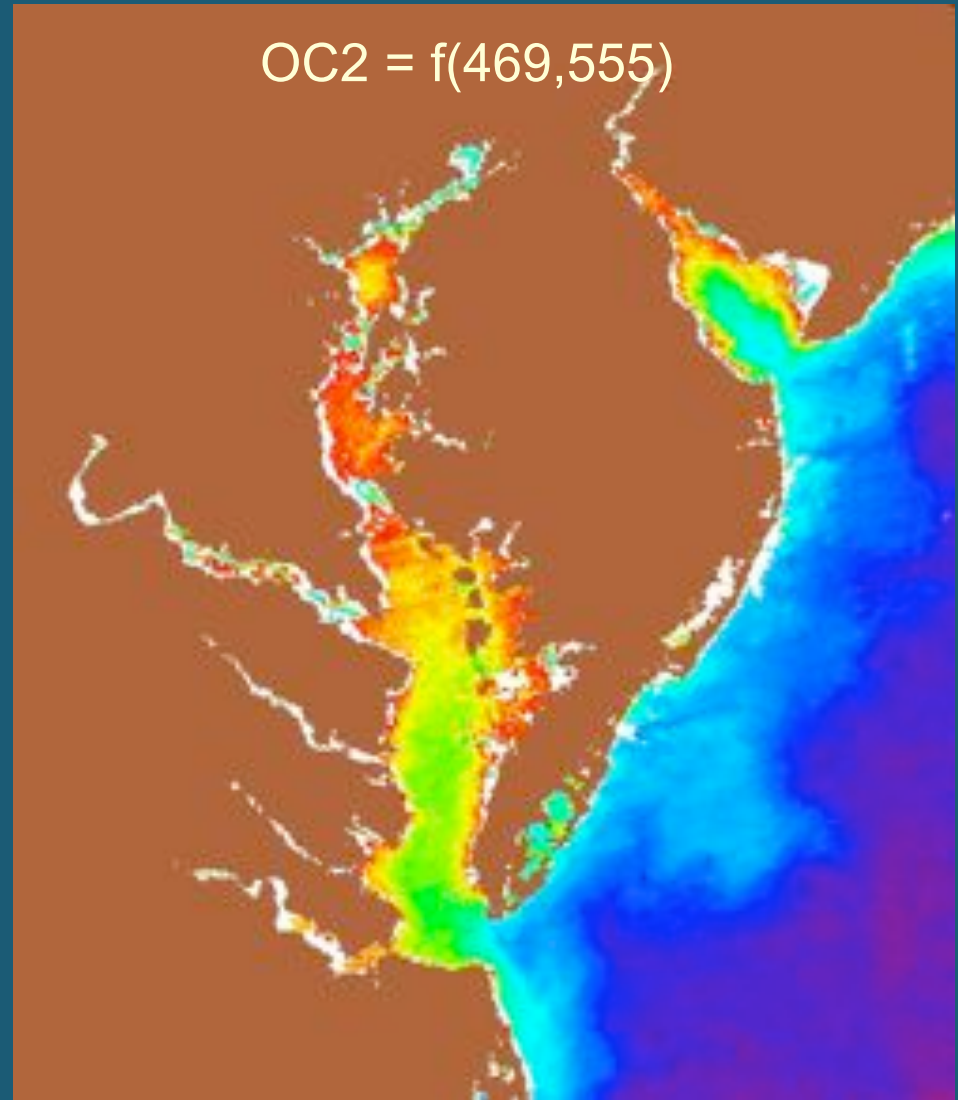


Chlorophyll: 1000 & 500-meter

OC3 = f(443,488,551)



OC2 = f(469,555)



0.4

mg m⁻³

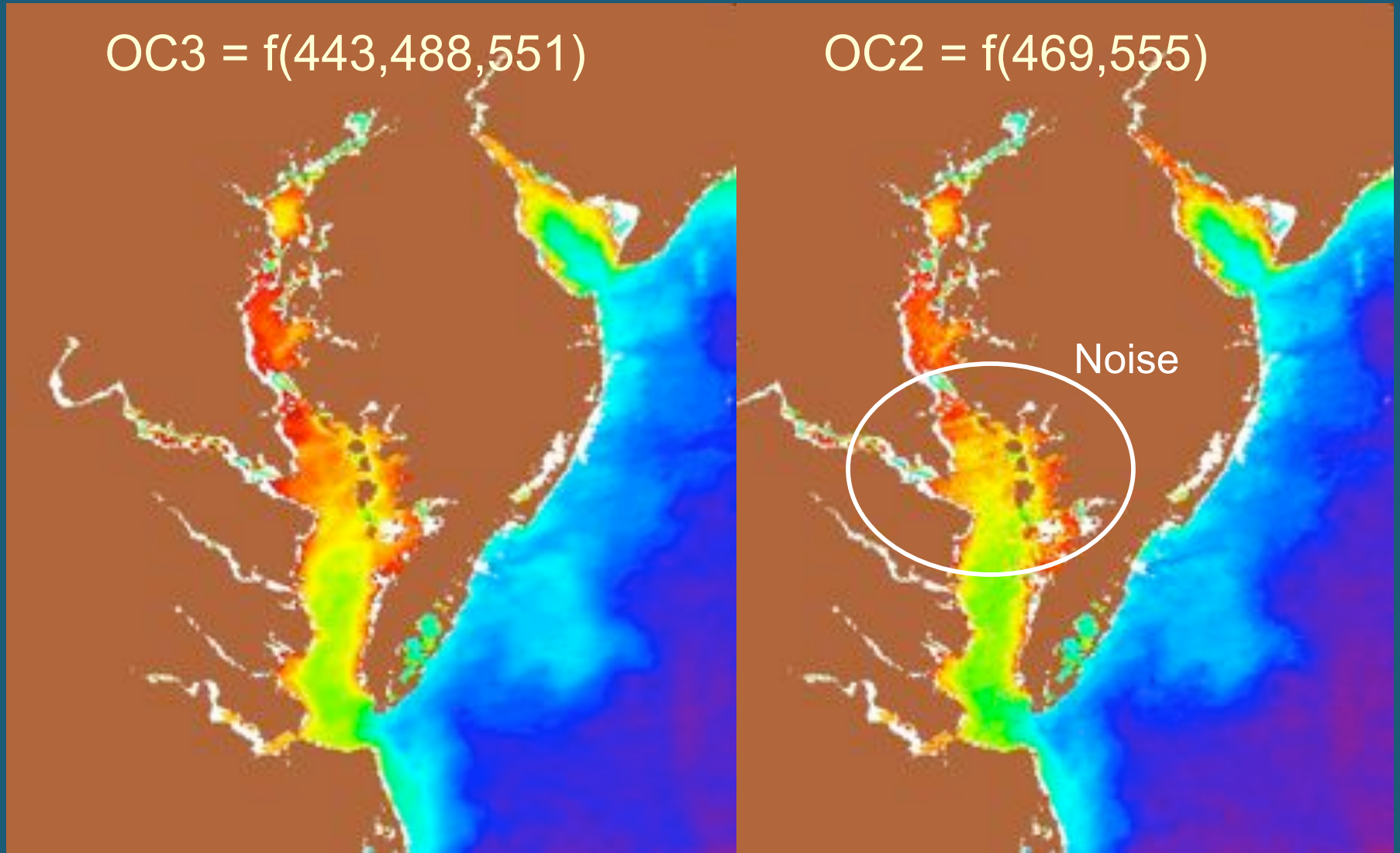
100



Chlorophyll: 500-meter Resolution

OC3 = f(443,488,551)

OC2 = f(469,555)



0.4

mg m^{-3}

100



MODIS Land/Cloud Bands of Interest

Band	Wavelength	Resolution	Potential Use
1	645 nm	250 m	sediments, turbidity, IOPs
2	859	250	aerosols
3	469	500	C_a , IOPs, CaCO_3
4	555	500	C_a , IOPs, CaCO_3
5	1240	500	aerosols
6	1640	500	aerosols
7	2130	500	aerosols

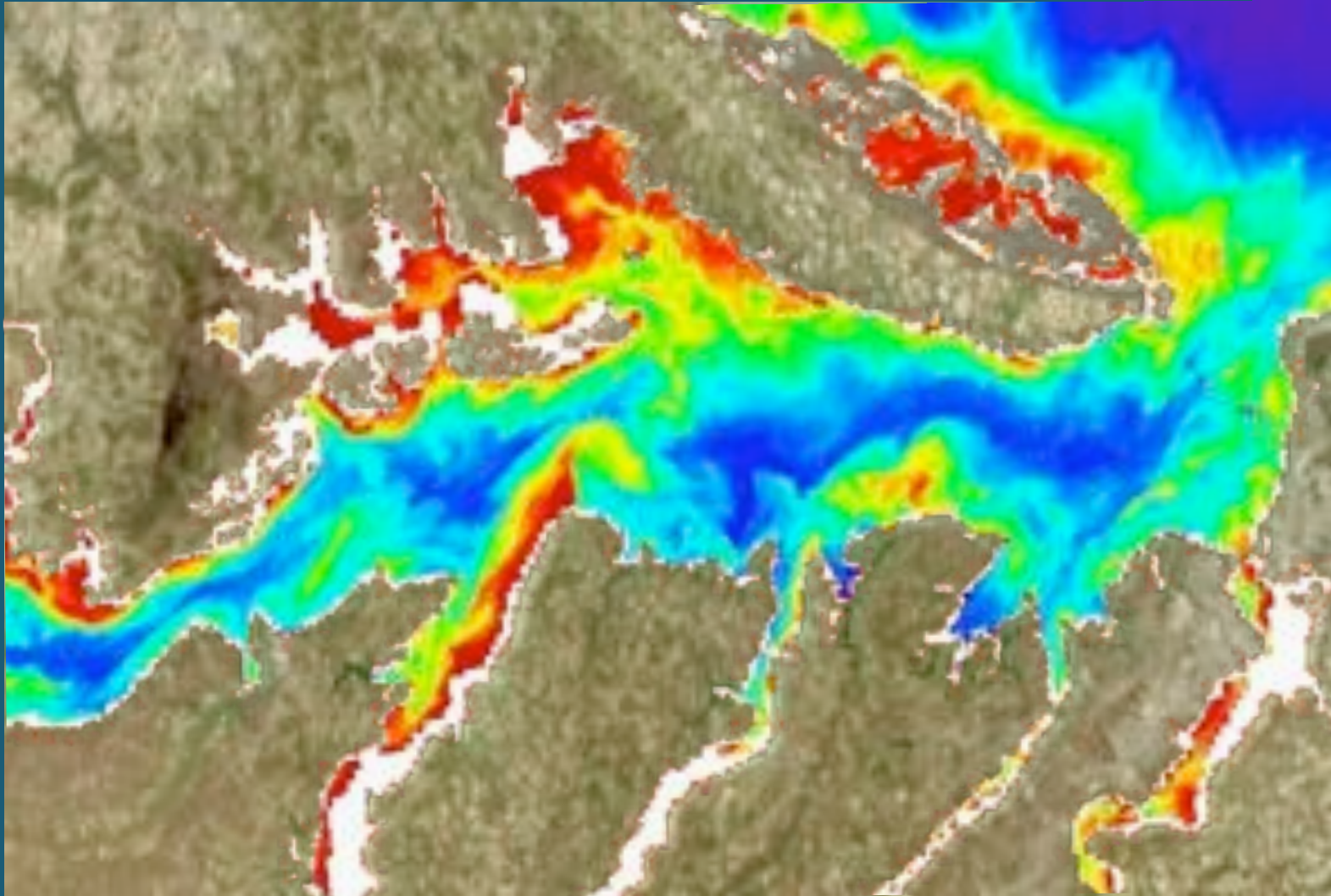
RGB Image: 645, 555, 469
showing river sediments



RGB Image at 250-meter Resolution



nLw(645) at 250-meter resolution



-0.1

$\text{mW cm}^{-2} \mu\text{m}^{-1} \text{sr}^{-1}$

3.0



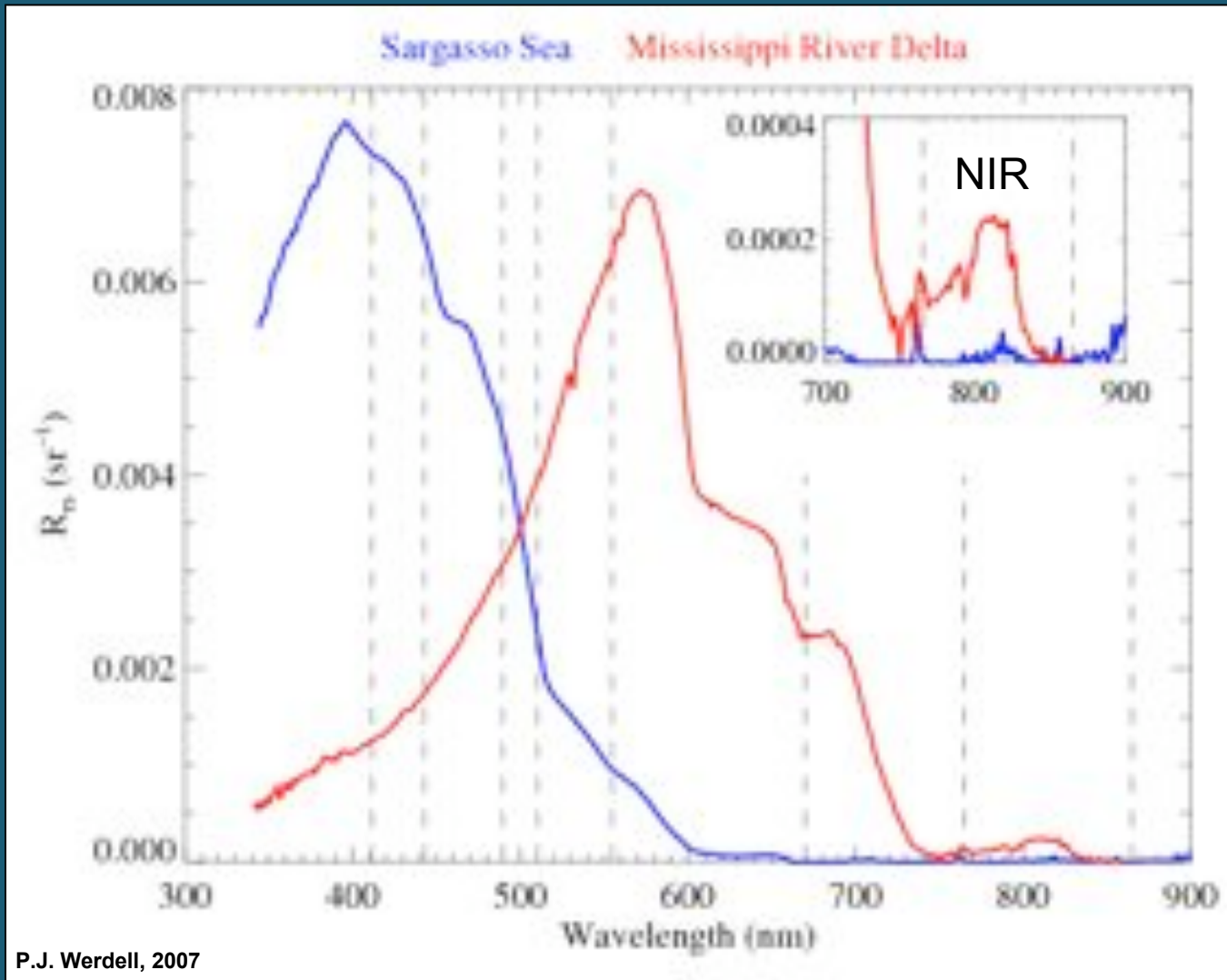
MODIS Land/Cloud Bands of Interest

Band	Wavelength	Resolution	Potential Use
1	645 nm	250 m	sediments, turbidity, IOPs
2	859	250	aerosols
3	469	500	C_a , IOPs, $CaCO_3$
4	555	500	C_a , IOPs, $CaCO_3$
5	1240	500	aerosols
6	1640	500	aerosols
7	2130	500	aerosols

SWIR

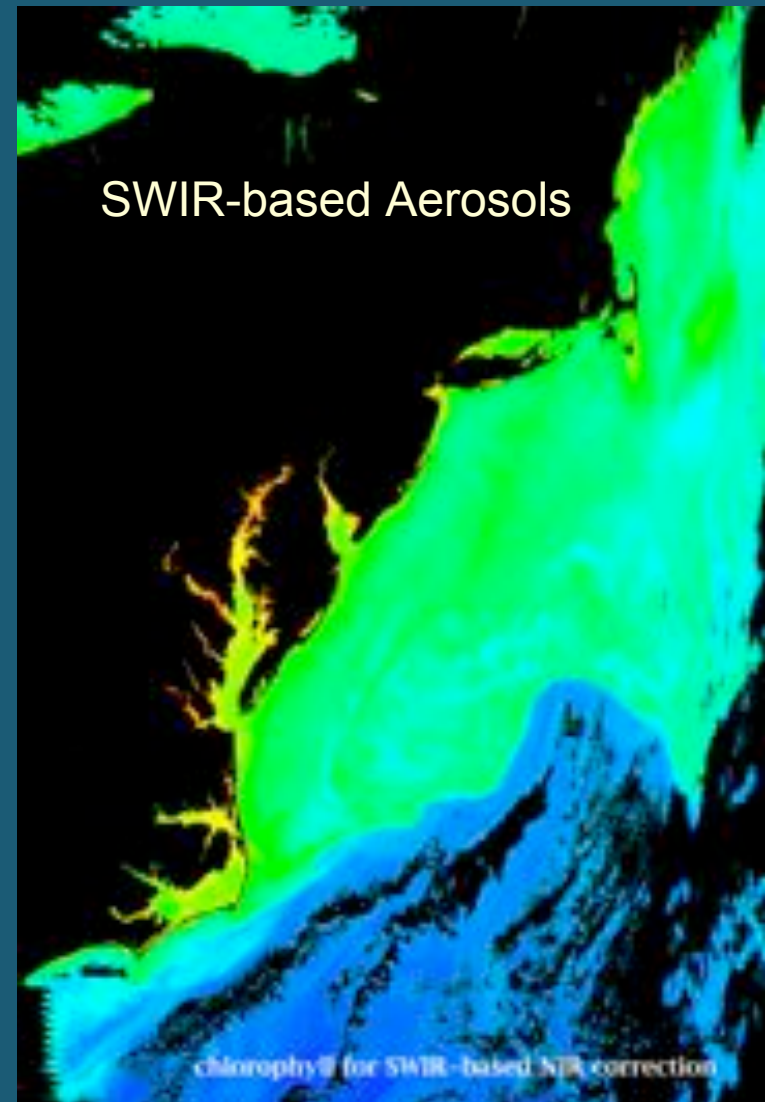
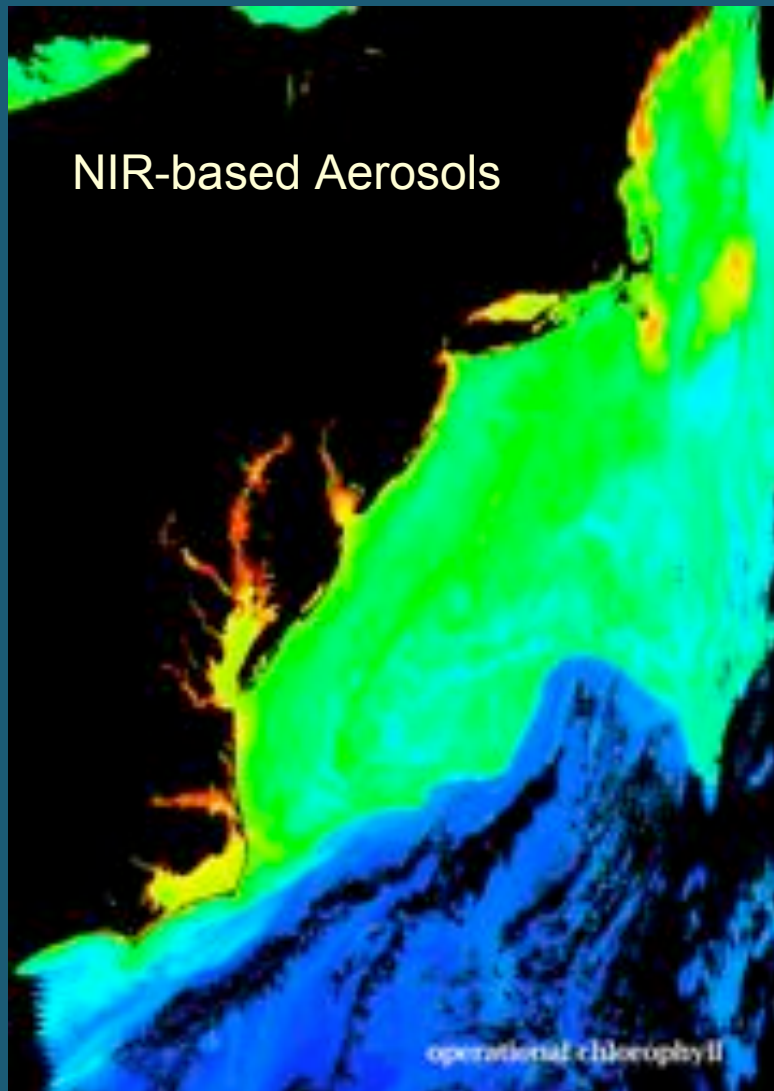
Why the SWIR?

separation of aerosol and water contributions



P.J. Werdell, 2007

Change in Chlorophyll Retrieval with Alternate Aerosol Determination Methods



More Info

Sample application in Chesapeake Bay:
in next talk by Jeremy Werdell

Software in SeaDAS (msl12)

Implementation details:

http://oceancolor.gsfc.nasa.gov/DOCS/modis_hires/

Conference paper:

Franz, B.A., P.J. Werdell, G. Meister, E.J. Kwiatkowska, S.W. Bailey, Z. Ahmad, and C.R. McClain (2006). MODIS Land Bands for Ocean Remote Sensing Applications, *Proc. Ocean Optics XVIII*, Montreal, Canada, 9-13 October 2006.

Poster at this meeting:

MODIS Land Bands for Ocean Remote Sensing Applications

Thank You !

Expanded MODIS Ocean Band Suite

Band Number	Wavelength (nm)	Band Width (nm)	Spatial Resolution (m)	SNR at L_{typ}	L_{typ} $mW\ cm^{-2}\ \mu m^{-1}\ sr^{-1}$	L_{max} $mW\ cm^{-2}\ \mu m^{-1}\ sr^{-1}$
8	412	15	1000	1773	7.84	26.9
9	443	10	1000	2253	6.99	19.0
3	469	20	500	556	6.52	59.1
10	488	10	1000	2270	5.38	14.0
11	531	10	1000	2183	3.87	11.1
12	551	10	1000	2200	3.50	8.8
4	555	20	500	349	3.28	53.2
1	645	50	250	140	1.65	51.2
13	667	10	1000	1962	1.47	4.2
14	678	10	1000	2175	1.38	4.2
15	748	10	1000	1371	0.889	3.5
2	859	35	250	103	0.481	24.0
16	869	15	1000	1112	0.460	2.5
5	1240	20	500	25	0.089	12.3
6	1640	35	500	19	0.028	4.9
7	2130	50	500	12	0.008	1.7

MODIS Land/Cloud Bands of Interest

Band	Wavelength	Resolution	Potential Use
1	645 nm	250 m	sediments, turbidity, IOPs
2	859	250	aerosols
3	469	500	C_a , IOPs, CaCO_3
4	555	500	C_a , IOPs, CaCO_3
5	1240	500	aerosols
6	1640	500	aerosols
7	2130	500	aerosols

MODIS Land/Cloud Bands of Interest

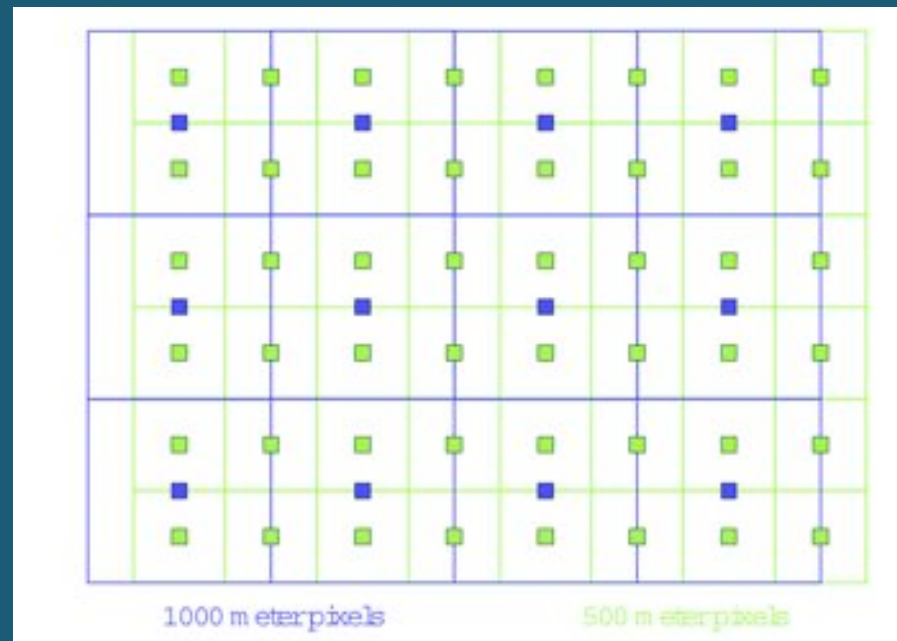
Band	Wavelength	Resolution	Potential Use
1	645 nm	250 m	sediments, turbidity, IOPs
2	859	250	aerosols
3	469	500	C_a , IOPs, CaCO_3
4	555	500	C_a , IOPs, CaCO_3
5	1240	500	aerosols
6	1640	500	aerosols
7	2130	500	aerosols

Multi-Resolution Implementation

Aggregation

QKM	HKM	1KM
645 nm	469 nm	412 nm
859 nm	555 nm	443 nm
	645 nm ¹	469 nm ³
	859 nm ¹	488 nm
	1240 nm	531 nm
	1640 nm	551 nm
	2130 nm	555 nm ³
		645 nm ²
		667 nm
		678 nm
		748 nm
		859 nm ²
		869 nm
		1240 nm ³
		1640 nm ³
		2130 nm ³
		3.9 um
		4.0 um
		11 um
		12 um

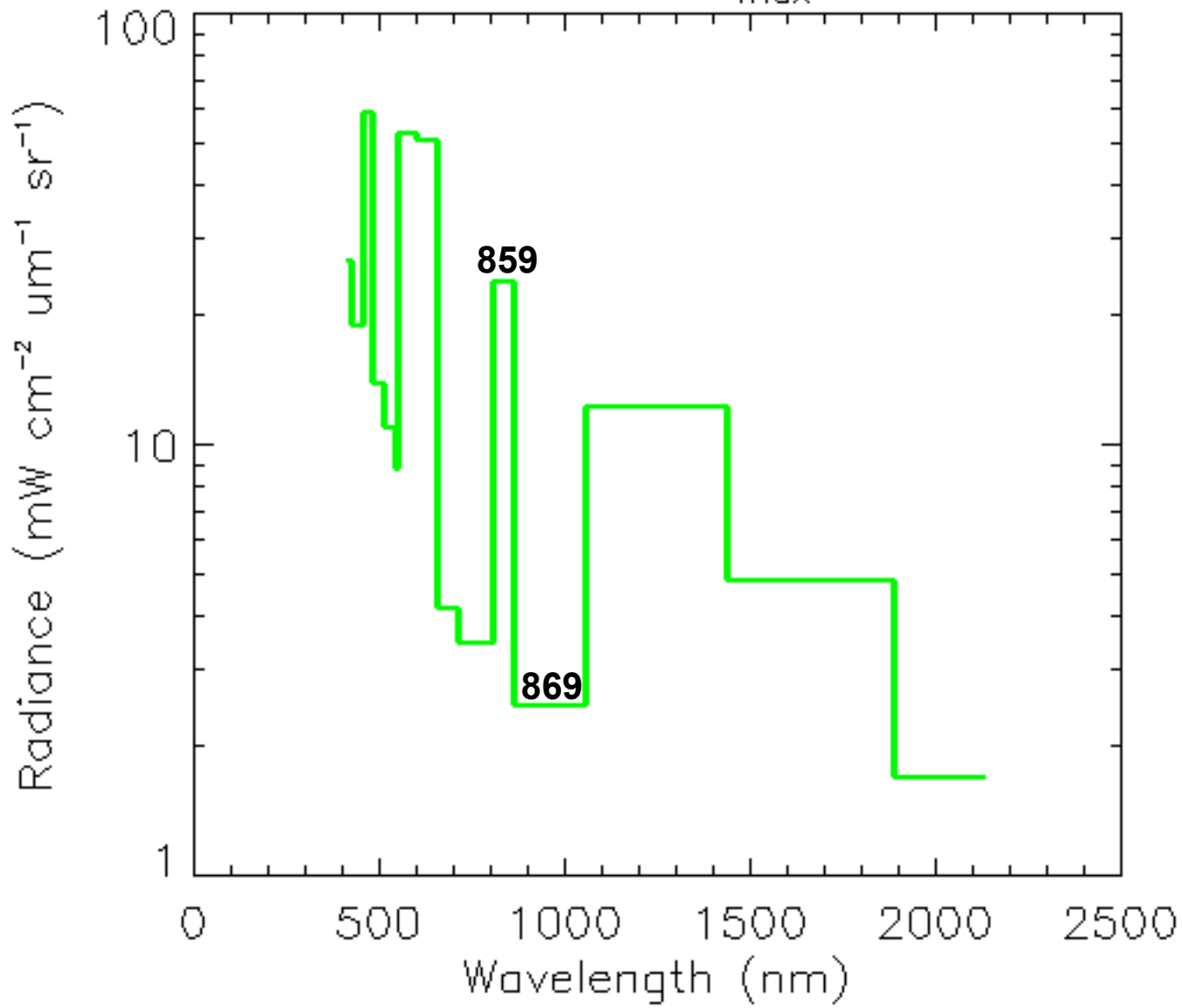
Interpolation



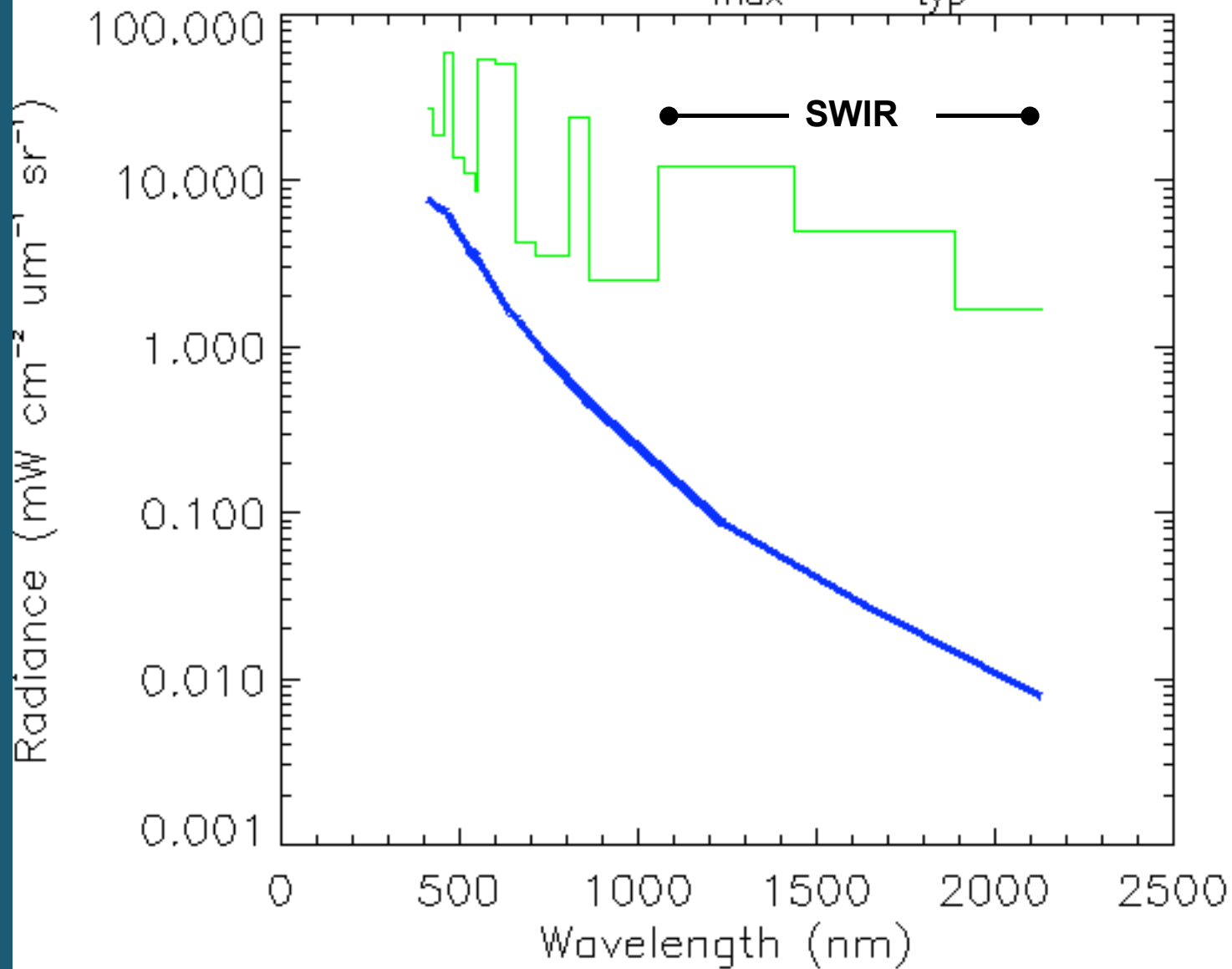
from Gumley, et al.

Observed (TOA) radiances, geolocation, radiant path geometries interpolated or aggregated to a common resolution.

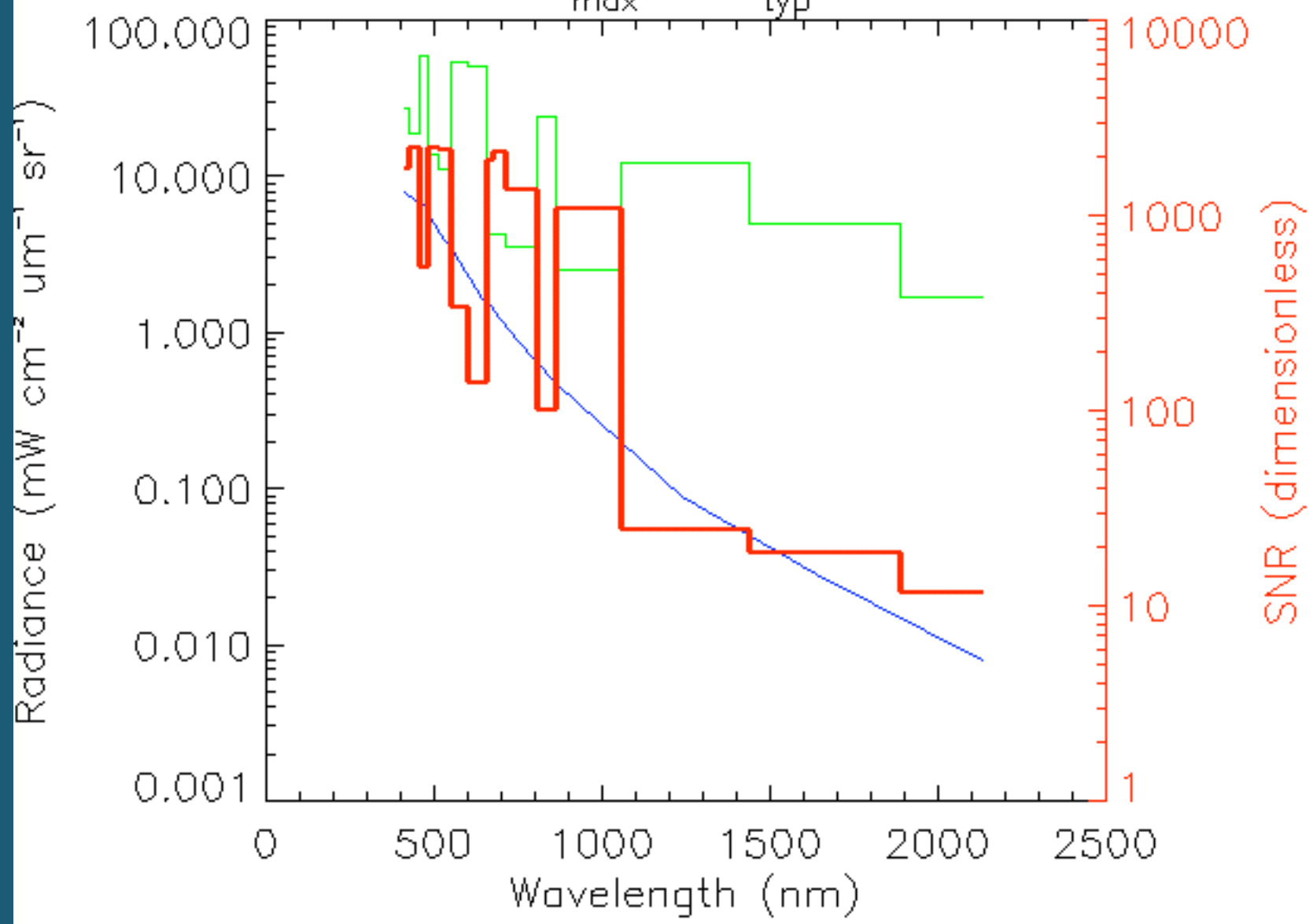
MODIS L_{\max}



MODIS L_{max} & L_{typ}



MODIS L_{max} & L_{typ} & SNR

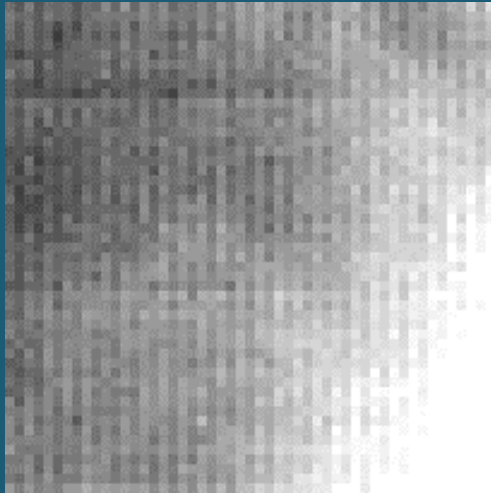


Characterization & Calibration

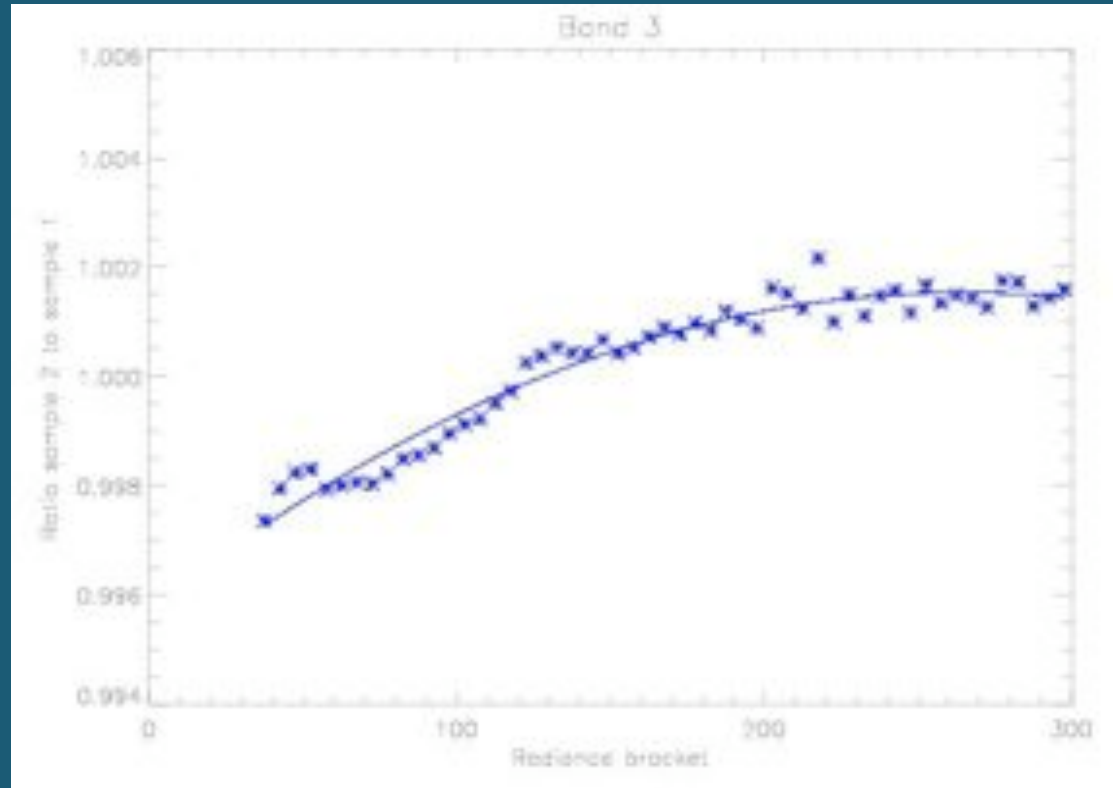
- Relative spectral response functions: Rayleigh & aerosol tables
- Polarization sensitivities (reanalysis of pre-launch testing)
- Relative detector and sub-sampling corrections (striping)
- Vicarious calibration to MOBY (preliminary)

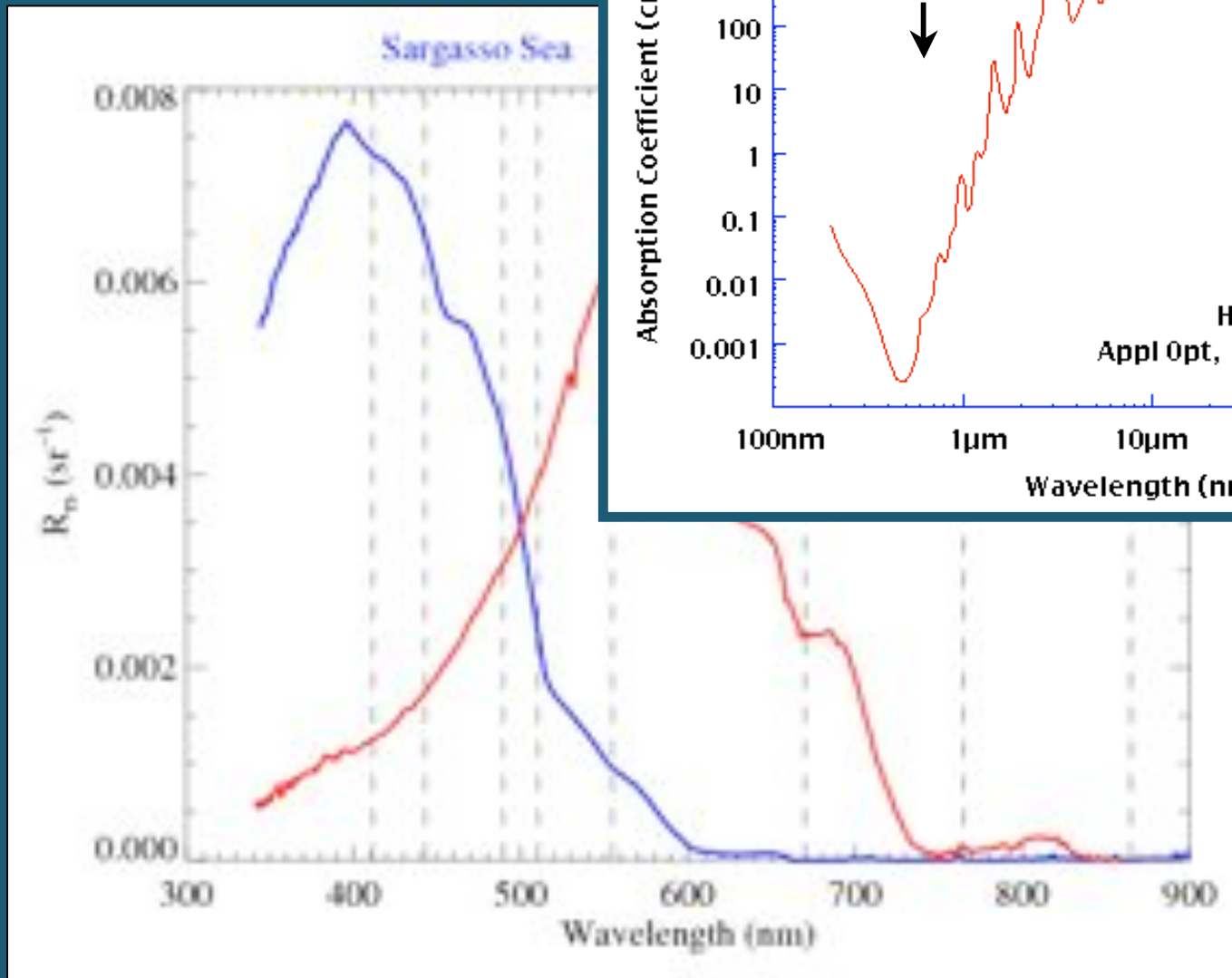
Detector and Sub-sample Striping

TOA radiance 469 nm



ratio of adjacent samples along scan, 469 nm





P.J. Werdell, 2007

SWIR →